

Melbourne

Has facility been convicted under an environmental statute in the past five (5) years?

YES Stop. Facility is ineligible for performance based monitoring frequency reduction.
NO Go to Step No. 2.

Has facility been criminally convicted of substantial endangerment to public health or welfare?

YES Stop. Facility is ineligible for performance based monitoring frequency reduction.
NO Go to Step No. 3.

For water quality (WQ) based pollutants/parameters being considered for reduction, have permit violations occurred during the past two (2) years?

YES Stop. Facility is ineligible for performance based monitoring frequency reduction.
NO Go to Step No. 4.

For pollutants/parameters considered as indicators, have permit violations occurred during the past year?

YES Stop. Facility is ineligible for performance based monitoring frequency reduction.
NO Go to Step No. 5.

Calculate the two (2) year composite average for WQ based pollutants/parameters being considered. Enter the value below:

CBOD 2.96 ug/L
NH3-N 0.3 ug/L
TSS 4.5 ug/L

5. Divide composite average calculated in Step No. 5 by the WQ based monthly average permit limit.

_____ = _____ %
CBODS = 2.96/10 = 29%
NH3-N = 0.3/4 = 7.5% → the only qualifying for reduction
TSS = 4.5/15 = 30%

- 7. a. If percentage calculated in Step No. 6 is 0% - 75%, see Table 1.
b. If percentage calculated in Step No. 6 is > than 75%, calculate the standard deviation and the coefficient of variation.

Calculate the ratio of the standard deviation to the coefficient of variation
If ratio is < 20% go to Table 2.
If ratio is > 20%, Stop. Facility is ineligible for performance based monitoring frequency reduction

8. List water quality based pollutants eligible for performance based monitoring frequency reduction:

Remarks: BEJ - no reduction

NPDES PERMIT FILE
NPDES # ARO020036
AFIN # 33-00026
Permit PN

Permit Writer M.J.
Telephone Number _____
Date 01/16/05

Correspondence
Technical Backup
Date Scanned 5/14/05

topozone



Take this map

- [VIEW MAPS](#)
- [GET DATA](#)
- [MY TOPOZONE](#)
- [WEB SERVICES](#)
- [ABOUT US](#)

- [Map/Photo Info](#)
- [Topo Download](#)
- [Photo Download](#)

36° 03' 31"N, 91° 55' 34"W (WGS84)
 USGS Melbourne Quad

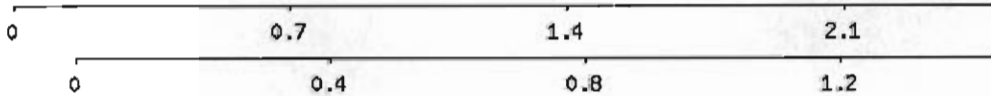
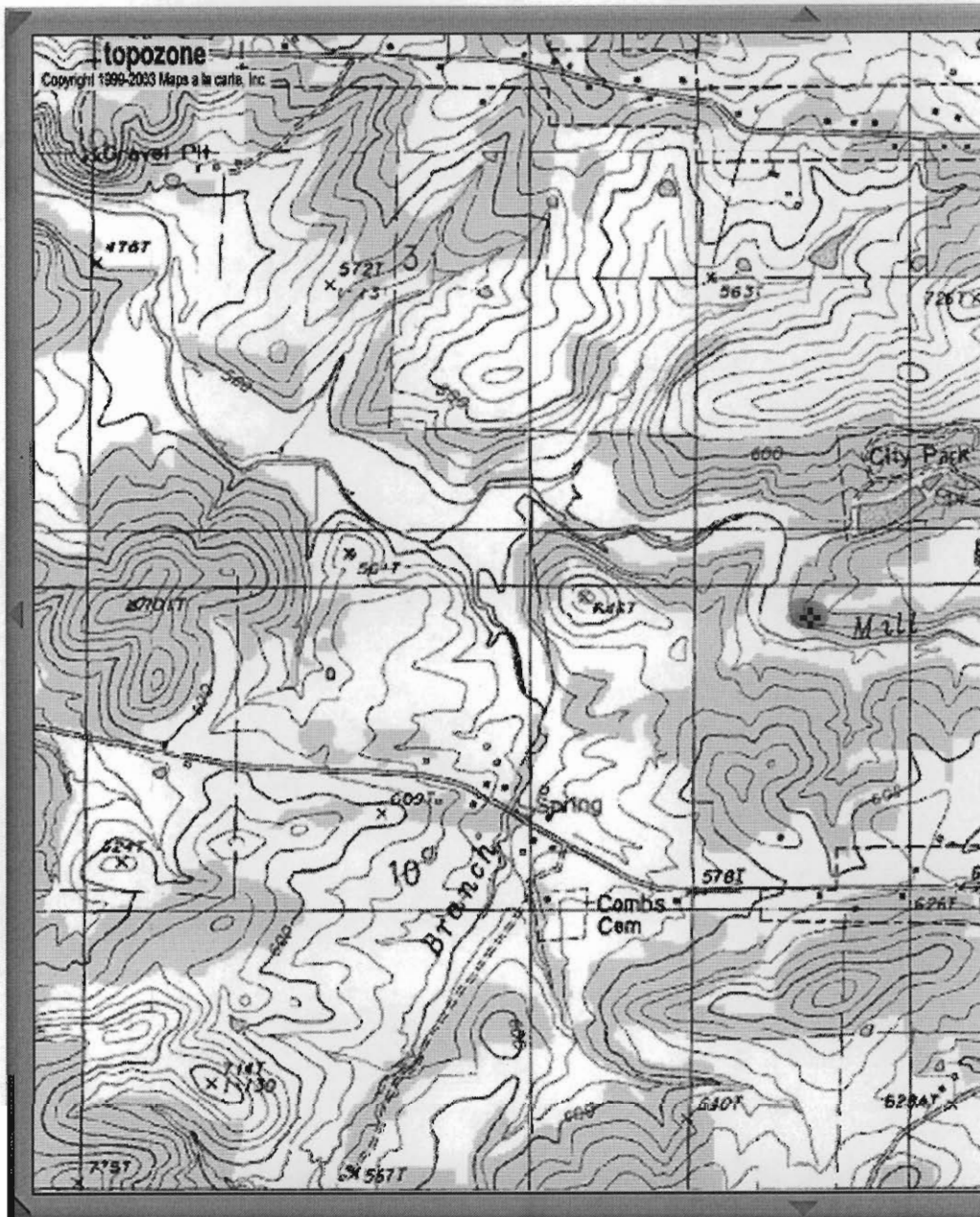
View TopoZone Pro aerial photos, shaded relief, street maps, interact

- USGS Topo Maps**
- 1:24K/25K Series
 - 1:100K Series
 - 1:250K Series
- Map Size**
- Small
 - Medium
 - Large
- View Scale**
- 1 : 50,000
- [Update Map](#)

- Coordinate Format**
- D/M/S
- Coordinate Datum**
- WGS84/NAD83
- Show target
- [Email this map](#)
- [Bookmark this map](#)
- [Print this map](#)

myTopo.com

GET A CUSTOM MAP PRINT



FACILITY COORD. OK

topozone



VIEW MAPS | **GET DATA** | **MY TOPOZONE** | **WEB SERVICES** | **ABOUT US**

-
-
-

36° 04' 23"N, 91° 55' 38"W (WGS84)
USGS **Melbourne** Quad

View *TopoZone Pro* aerial photos, shaded relief, street maps, interact

USGS Topo Maps

- 1:24K/25K Series
- 1:100K Series
- 1:250K Series

Map Size

- Small
- Medium
- Large

View Scale

1 : 50,000

Coordinate Format

D/M/S

Coordinate Datum

WGS84/NAD83

Show target

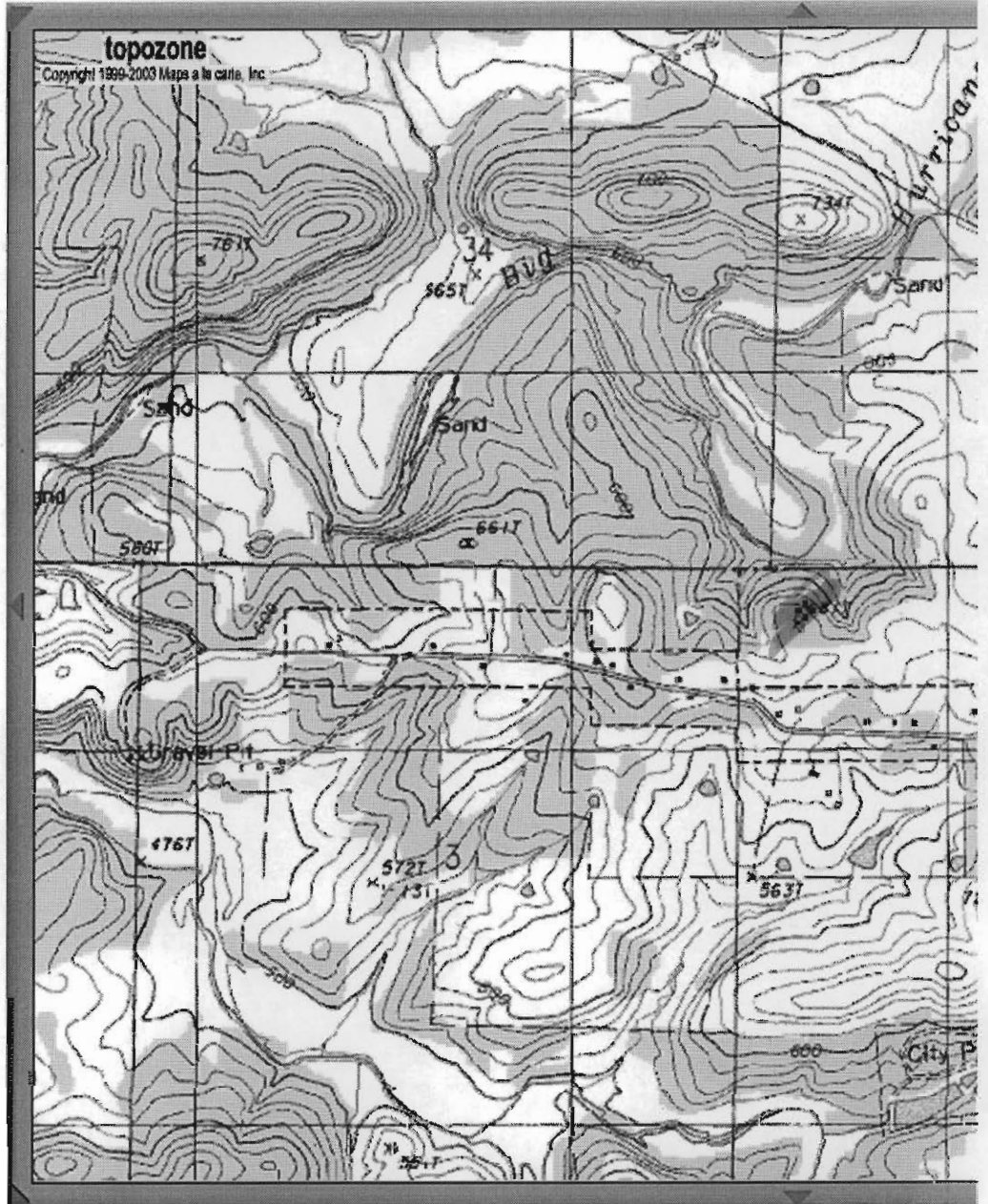
Email this map

Bookmark this map

Print this map

myTopo.com

**GET A
CUSTOM
MAP PRINT**



WRONG - OUTFALL